

Health Overview and Scrutiny Panel

Colin Bradbury
Area Director (North Somerset)

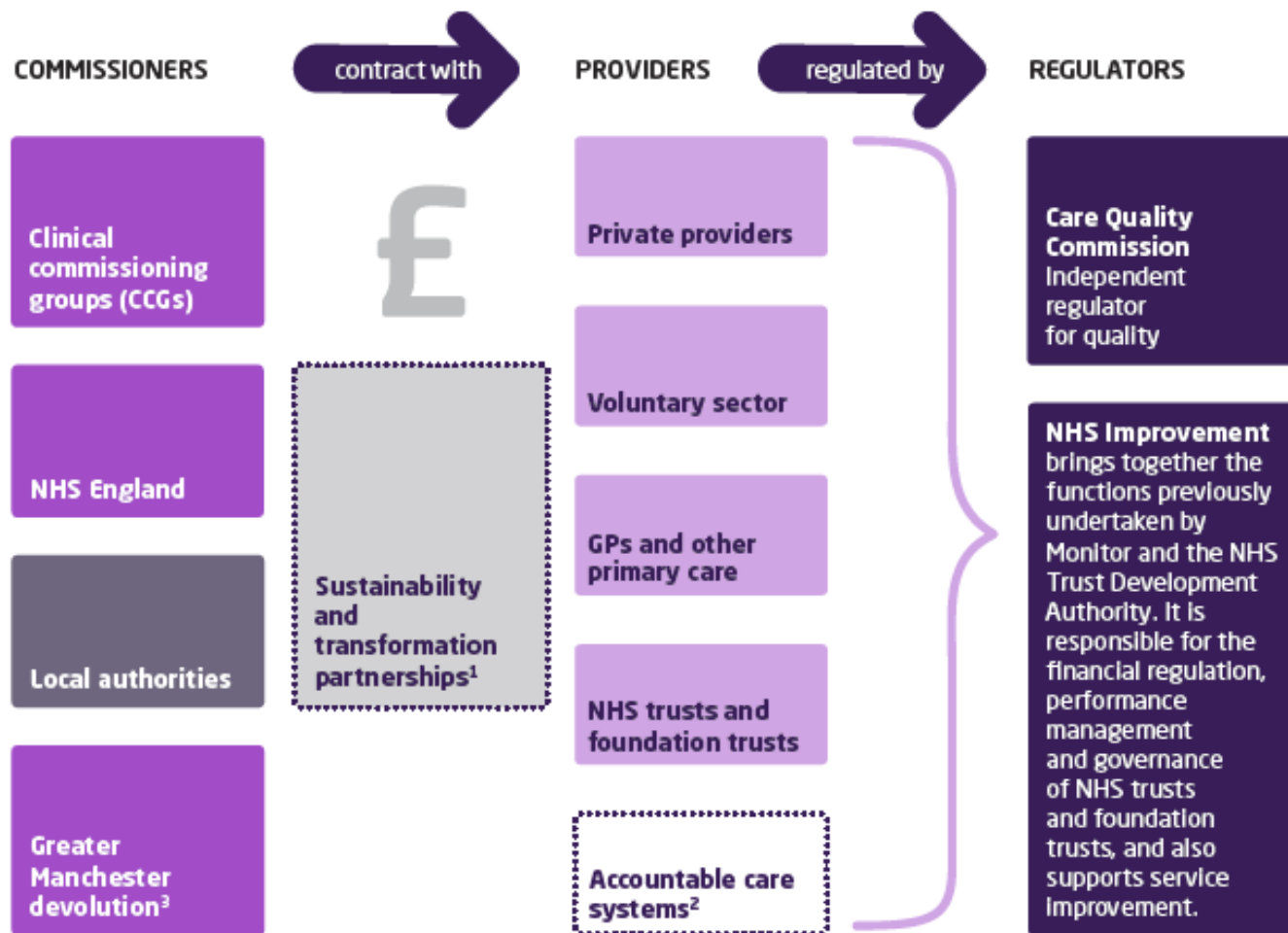
Thursday 6th June 2019

Outline for today's presentation

- 1. A (brief) introduction to NHS structures**
- 2. A summary of key health issues in North Somerset**
- 3. Focus on Healthy Weston**

1. A brief introduction to NHS structures

The NHS: How providers are regulated and commissioned



1 Since December 2015 NHS providers, CCGs, local authorities and other health care services have come together to form 44 STP 'footprints'. These are geographic areas that are co-ordinating health care planning and delivery, covering all areas of NHS spending on services from 2016/17 to 2020/21.

2 From mid-2017, eight areas of England are evolving into accountable care systems. This involves commissioners and providers assuming responsibility for a budget to deliver integrated services for a defined population.

3 From April 2016, leaders in Greater Manchester have taken greater control of the region's health and social care budget. This includes taking on delegated responsibility for several commissioning budgets previously controlled by NHS England. Other areas – including London and parts of Surrey – are also pursuing devolved arrangements.

2. A summary of key health issues in North Somerset

Why we need to change

1 Changing health needs

Our population is growing, getting older, living with more long term conditions and there are significant inequalities in health

2 Variations in care and access in primary and community care

There are differences in the way care is currently provided, with some patients finding access more difficult than others

3 Meeting national clinical quality standards

Some services at Weston General Hospital don't have sufficient volumes of certain cases and there is a shortage of specialist staff

4 Getting value for money

We must live within our financial means and make sure we use our available resources most effectively to meet local needs

Healthier Together's strategic vision for an Integrated Care System



Key issues and priorities in North Somerset

- Integration and value
- Primary Care
- Estates – Parklands, Millcross and Central Weston
- Acute care collaboration (e.g. networked provision for maternity and breast services)
- Children and Young People's Mental Health
- Healthy Weston and merger with University Hospitals Bristol

3. A focus on Healthy Weston

Healthy Weston: Developing our proposals

- **Our proposals have been designed and shaped by senior doctors** across our region, with input from health and care professionals and the public.
- They have been through **rigorous assurance processes** including those of our national regulator NHS England and the South West Clinical Senate.
- They have met a series of strict evaluation criteria that have been designed to prioritise **safety, quality and sustainability**.

Three strands of work

1

Proposed changes to services at Weston Hospital to maintain and build quality and safety

2

Wider improvements

3

Longer term ambitions for high quality, sustainable care

1 Proposed changes to services at Weston Hospital



1a) 24/7 urgent and emergency care, provided in a different way

The current temporary A&E opening times would be made permanent.

A&E at Weston Hospital would be open from 8am – 10pm, seven days a week.

General Practitioners would be added to the A&E department team, to improve the skills mix and help even more people to get the right care, first time.

More patients would be admitted directly to hospital beds overnight where clinically appropriate, via GP referral.

Out-of-hours GP services would be enhanced.

As is the case now, patients with major trauma, a very unwell child, or a severe heart attack (for example) would be taken straight to nearby specialist hospitals by ambulance.

1 Proposed changes to services at Weston Hospital



1b) Critical care

Weston Hospital would be able to provide critical care up to level 3 for 12 hours on a high dependency unit.

Patients requiring more intensive support for longer, would be transferred to larger, specialist hospitals to continue their care.

This change will affect around 100 patients a year.

As their condition improves, these patients would be transferred back to Weston Hospital to continue their recovery.

Focussing on providing for the most common needs of local people means we are less likely to face problems with very specialist staffing.



Proposed changes to services at Weston Hospital



1c) Changes to emergency surgery

Under our proposals, emergency surgery would be provided in the daytime only.

Patients requiring specialist surgery, or emergency surgery overnight, would either be taken directly to a larger hospital by ambulance, or stabilised at Weston then transferred.

This means that between 1 and 2 additional patients per day would need to be treated at neighbouring hospitals.

The vast majority of non-complex emergency surgery would continue at Weston Hospital, overseen by a consultant surgeon.

2 Wider improvements



Developing Weston as a 'centre of excellence' for integrated services for frail older people

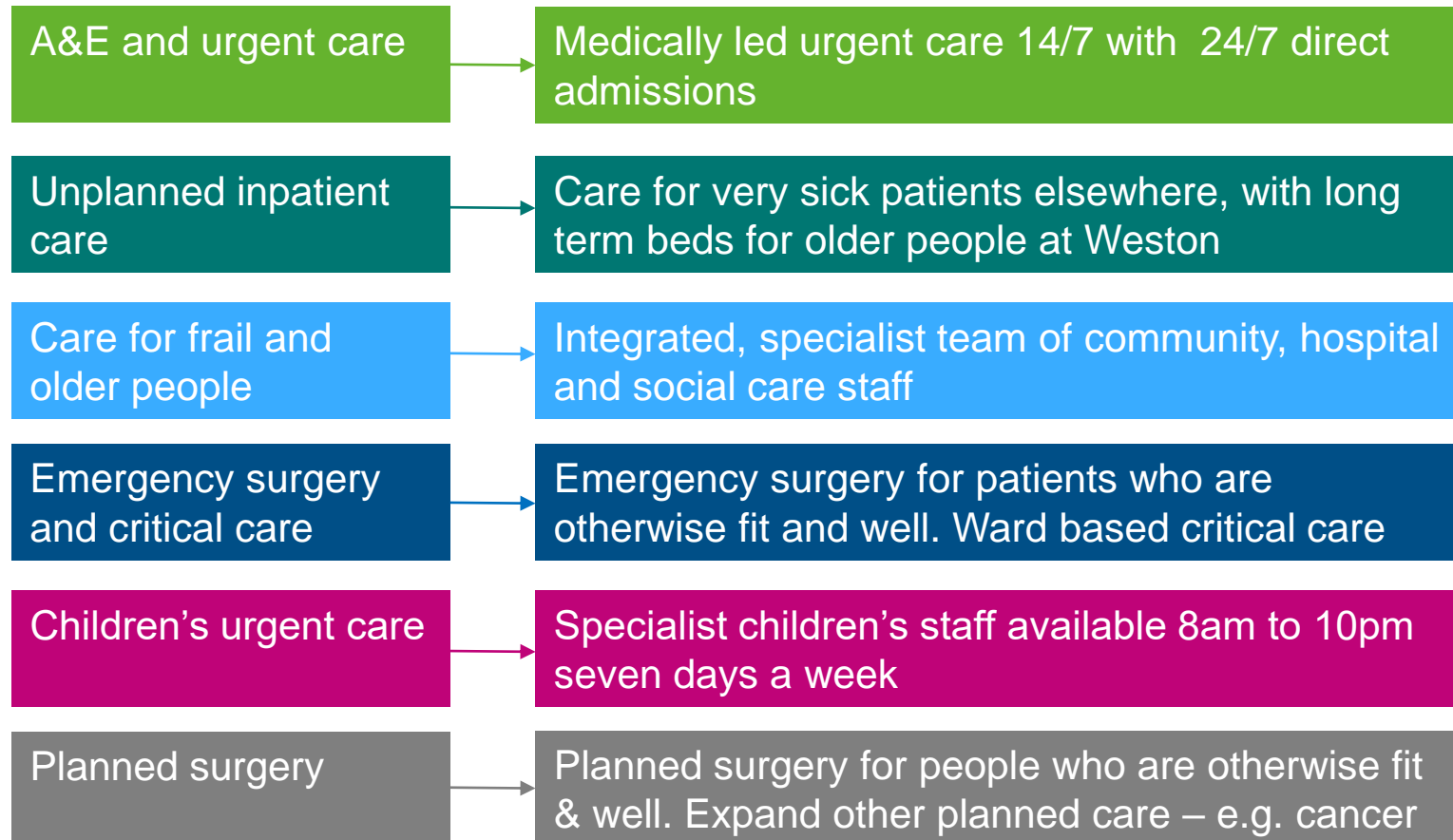
Enhancing children's urgent care so it's available 7 days a week, instead of 5, and in the evenings

Strengthening primary care, with GP practices working together to offer more appointments and meet local needs

Investing in a mental health crisis and recovery centre in the middle of Weston, open at evenings and weekends


3 What could services in Weston look like in 2025?

We want to continue to co-design services with staff and patients, building on immediate changes as part of the national NHS Long Term Plan.



Next steps

- **No decisions have yet been made** about the shape of future services and won't be until later in the year.
- **The consultation runs until midday Friday 14th June.**
- Our proposals have been developed by GPs and hospital consultants from across the region. We are **working closely with the hospital consultants group** to take account of their alternative proposals.
- Any additional proposals or suggestions will need to meet our **strict evaluation criteria** that have been put in place to ensure safety, quality and sustainability.



Tell us
what you
think